

ARTSPACE LOVELAND LOFTS

artspace
Building better communities through the arts

140 West 3rd Street
Loveland, CO 80537



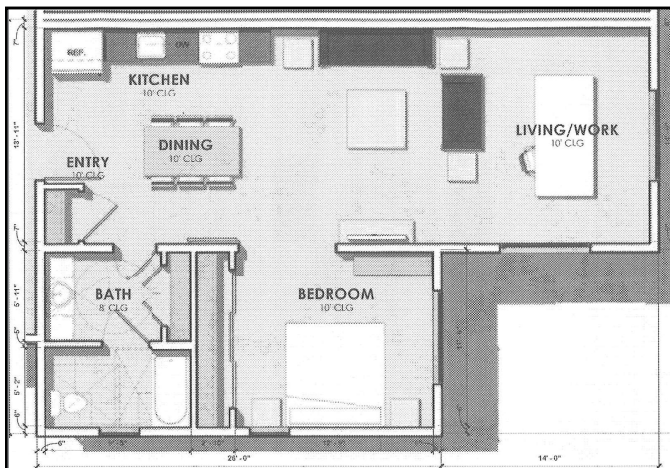
Studio, 1, 2, & 3 Bedroom Live/Work Space Lofts

682-1383 sq. ft.

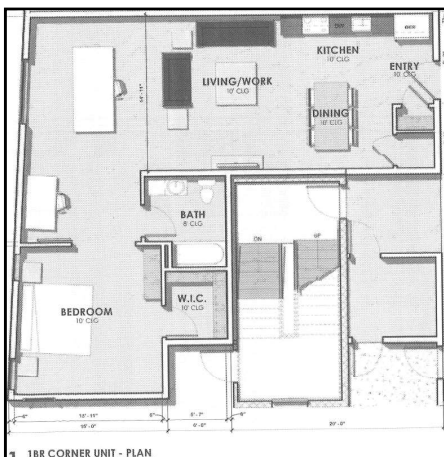
30%-60% Area Median Income (AMI) Levels

ARTSPACE LOVELAND LOFTS, LOCATED AT 140 WEST 3RD STREET IN DOWNTOWN LOVELAND, CONSISTS OF 30 LIVE/WORK SPACE FOR ARTISTS AND THEIR FAMILIES. LOFTS VARY IN SIZE INCLUDING STUDIO, ONE, TWO, AND THREE-BEDROOMS. UNIT RENTS SERVE HOUSEHOLDS AT OR BELOW 60% OF AREA MEDIAN INCOME LEVELS.

1 BEDROOM UNIT



1 BEDROOM CORNER UNIT

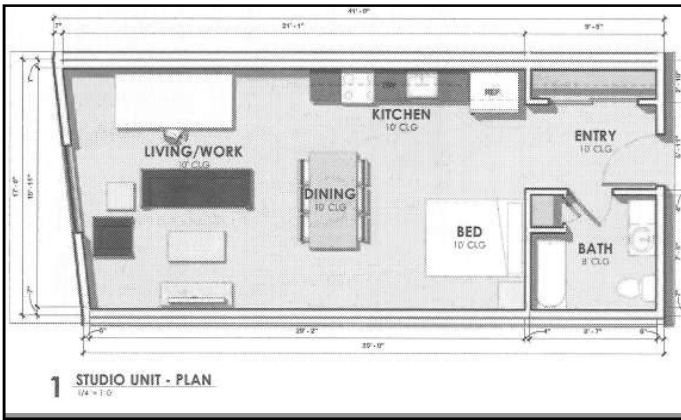


AMENITIES INCLUDE:

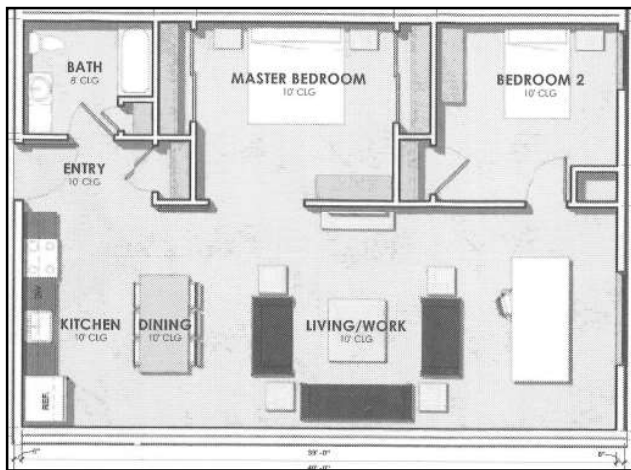
- Refrigerator
- Range
- Disposal
- Dishwasher
- Central air
- On-site Laundry

Other Artspace features include: On-site manager; 24-hour on call maintenance staff; and no application fees.

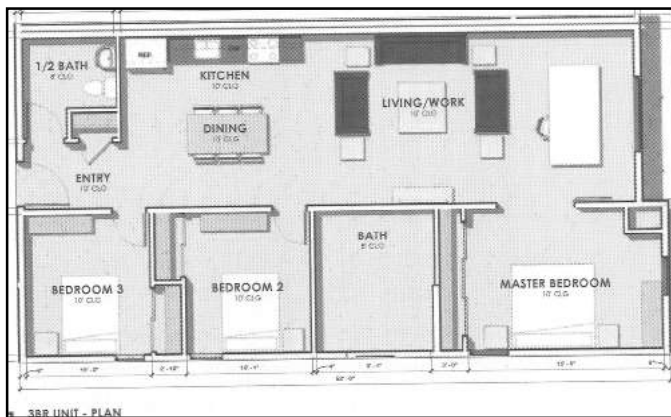
STUDIO UNIT



2 BEDROOM UNIT



3 BEDROOM UNIT



INCOME LIMITS

PERSONS IN HOUSEHOLD	MAXIMUM INCOMES	
	30% AMI	THRU 60% AMI
1 Person	\$18,330	\$36,660
2 Persons	\$20,940	\$41,880
3 Persons	\$23,550	\$47,100
4 Persons	\$26,160	\$52,320
5 Persons	\$28,260	\$56,520

Your gross income should not be less than double the amount of rent. Gross income includes the combined annual income of all people living in the home.

CONTACT US TODAY!

375 W. 37th St., Suite 200
 Loveland, CO 80538
 (970) 667-3232

www.lovelandhousing.org

RENT SUBJECT TO CHANGE

RENT RANGES

\$423 TO \$1287 DEPENDENT ON ANNUAL INCOME (AMI) AND LOFT SIZE

RENT AND INCOME LIMITS ARE SUBJECT TO CHANGE

Residents are responsible for electric utilities, including electric heat. A security deposit of one month's rent is required at move-in.

Apply Today At:

375 W. 37th Street Suite 200
 Loveland CO, 80538
 Main Office: 970-667-3232
 Fax: 970-667-2860
 TDD 970-667-3293

MANAGED BY:



www.lovelandhousing.org
 Hours: Monday-Friday 8-5p.m.



The Loveland Housing Authority does not discriminate on the basis of sex, age, race, religion, familial status, national origin or disability, in the admissions of, access to, treatment of or employment in its federally assisted programs or activities.