

WILLOW PLACE APARTMENT HOMES

2600 North Monroe Avenue

Loveland, CO 80538



BUILT SPECIFICALLY FOR PROJECT SELF-SUFFICIENCY PARTICIPANTS, WILLOW PLACE IS A 20 UNIT APARTMENT COMPLEX HOSTING BOTH 2 AND 3 BEDROOM UNITS.

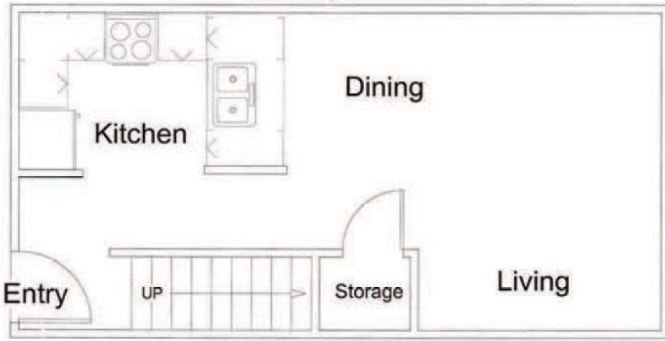
Apartments in the Willow Place Apartment Complex are filled by PS-S. The mission of Project Self-Sufficiency is to assist low-income, single parents in their efforts to build and maintain strong, healthy families; achieve economic independence; and become free from community and government assistance.

The families selected for Willow Place are program participants already enrolled and active in the PS-S program. This stylish apartment complex has a central clubhouse and coin operated laundry for residents that receive self-sufficiency services through PS-S (a not-for-profit organization).

The apartments are located in central Loveland and boast of easy access to major shopping, postal services, restaurants, fast food convenience, and major bus routes. The community is managed by an on-site manager and by the committed PS-S and Housing Authority staff. All applicants for the Willow Place apartments are referred to the Housing Authority by the PS-S staff. Please feel free to apply for this vital and important single parent program at www.ps-s.org or by calling 970-635-5912.

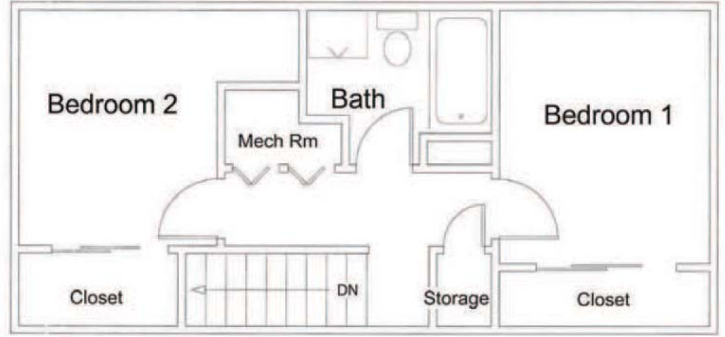
School Districts: Mary Blair Elementary, Conrad Ball Middle School, and Mountain View High School.

Willow Place
Unit Type 2 ----- 2 Bedroom
796 Square Feet



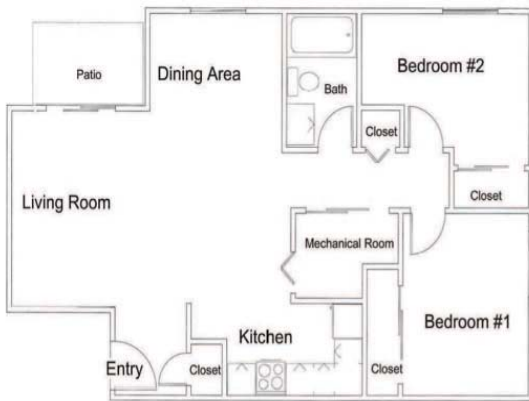
First Floor

Willow Place
Unit Type 2 ----- 2 Bedroom
796 Square Feet



Second Floor

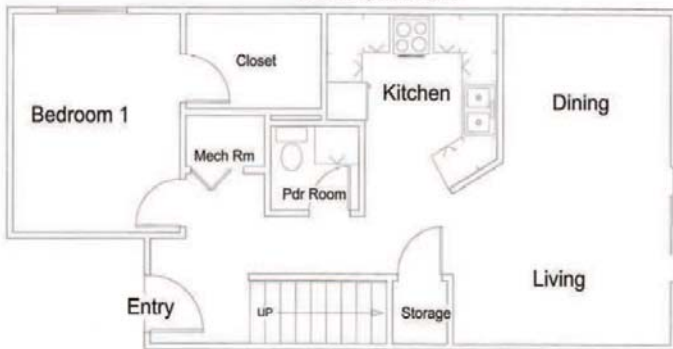
Willow Place
Unit Type 3 --- 2 Bedroom
804 Square Feet



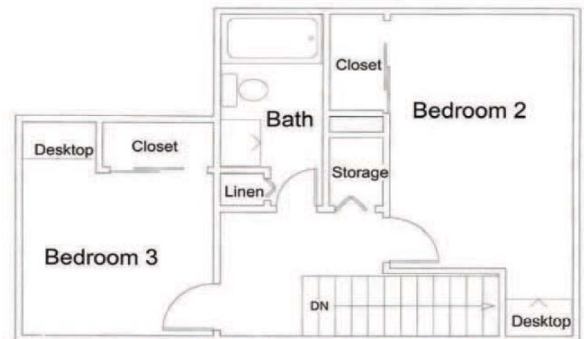
Willow Place
Unit Type 1 ---- 3 Bedroom
936 Square Feet



Willow Place
Type 4 Unit ---- 3 Bedroom
1050 Square Feet



Willow Place
Unit Type 4 ----- 3 Bedroom
1050 Square Feet



First Floor

Second Floor

Apply Today At:



375 W. 37th Street Suite 200

Main Office: 970-667-3232

Fax: 970-667-2860

TDD 970-667-3293

www.lovelandhousing.org

Hours: Monday-Friday 8-5p.m.

CAROLYN COFFELT

Housing Coordinator

Phone: (970).635.5919

Email: ccoff@lovelandhousing.org



The Loveland Housing Authority does not discriminate on the basis of sex, age, race, religion, familial status, national origin or disability, in the admissions of, access to, treatment of or employment in its federally assisted programs or activities.